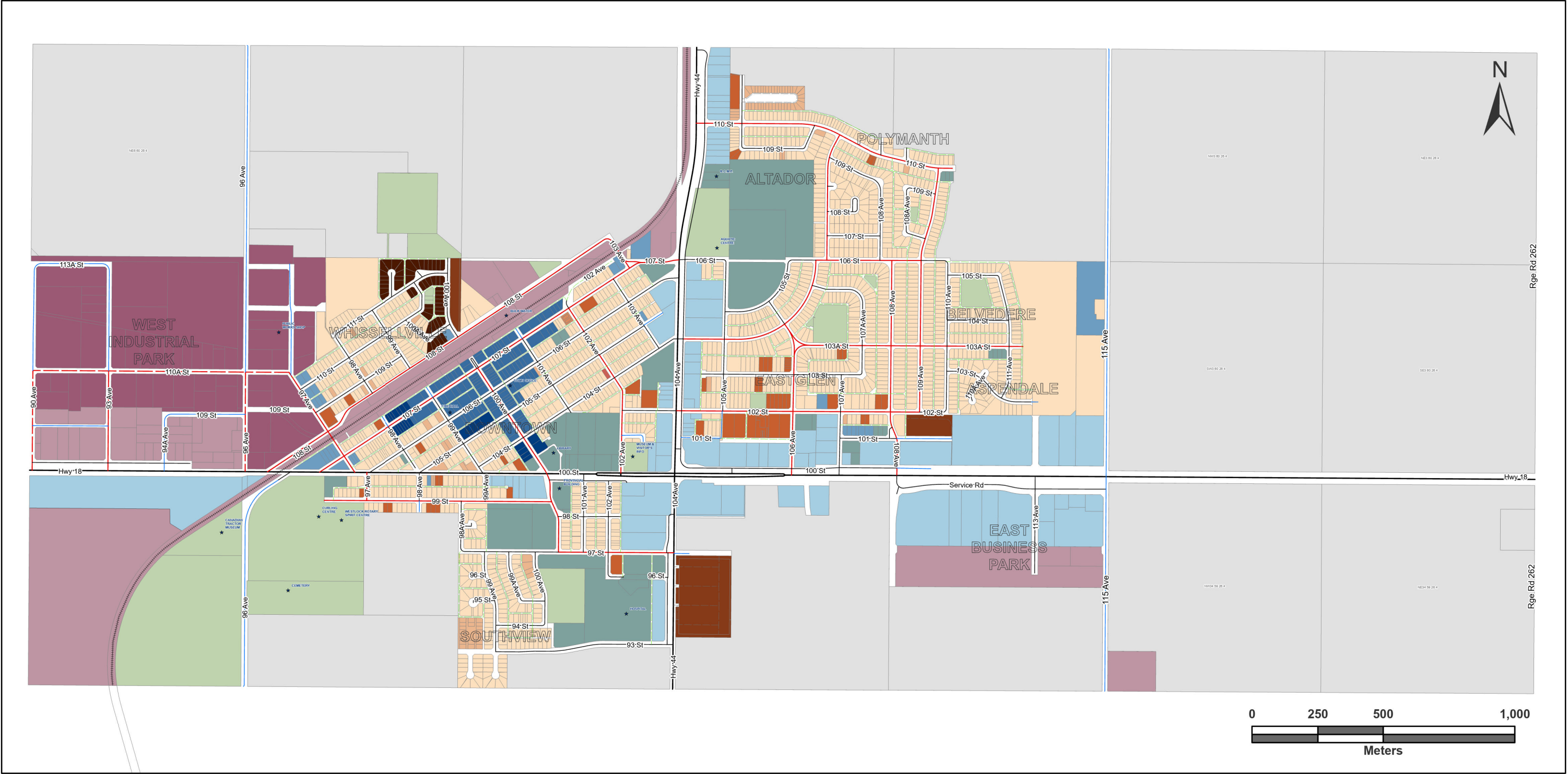


LAND USE BYLAW 2022-12
APPENDIX A: LAND USE MAP



- Arterial, Paved

Collector, Paved

Collector, Gravel

Local / Street, Paved

Local / Street, Gravel

Alleyway / Lane, Paved

Alleyway / Lane, Gravel

Local / Strata

R1- Low Density Residential

R1-B - Low Density Variable Residential

R2 - Medium Density Residential

R3 - High Density Residential

R4 - Estate Residential

RMM - Medium Density Multiple Residential

RMH1 - Manufactured Home Subdivision Residential

RMH2- Manufactured Home Park Residential

RNC - Residential Neighbourhood Commercial

DTMU - Downtown Mixed Use

DTT - Downtown Transitional

CMP - Commercial Multi-Purpose

CH - Highway Commercial

IH - Industrial Heavy

IL - Industrial Light

I - Institutional

PR - Parks and Recreation

UR - Urban Reserve

DC - Direct Control

Produced: 2025/09/09, LandUseBylaw/LUB_11X17

The Town of Westlock makes no representation or warranties regarding the information contained in this document, including, without limitation, whether said information is accurate or complete. Persons using this document do so solely at their own risk, and the Town of Westlock shall have no liability to such persons for any loss or damage whatsoever.

This document shall not be copied or distributed to any person without the express written consent of the Town of Westlock.

©2025 Town of Westlock. All rights reserved.